

Schlumberger

VISION service

1:200 Measured Depth

Real Time Data

Company: Beach Petroleum

Well: Spikey Beach-1

Field:

Rig Name: Ocean Patriot

State: VIC

Country: Australia

Latitude: 40° 28' 53.9" S

Longitude: 145° 52' 24.71" E

Block:

Custom: 09ASSQ0029

Rig Name: Ocean Patriot

Rig Type: Semi Submersible

FL: T38/P

FL1:

FL2:

Log Measured From - Drill Floor: 21.5 m

Permanent Datum - Mean Sea Level



Ground Level: 74.0 m

Acquisition Dates: 11 Sep 09

Print Interval: 815.0(m) to 1754.9(m)

Index Types: Measured Depth

Index Scales: 1:200

Depth Source: Driller's Depth

Depth Sensor: DES

Conveyance: Drill Pipe

Print Type: Field

Spud Date: 07/09/09

Other Services:

Directional Surveys

Disclaimer

THE USE OF AND RELIANCE UPON THIS RECORDED-DATA BY THE HEREIN NAMED COMPANY (AND ANY OF ITS AFFILIATES, PARTNERS, REPRESENTATIVES, AGENTS, CONSULTANTS AND EMPLOYEES) IS SUBJECT TO THE TERMS AND CONDITIONS AGREED UPON BETWEEN SCHLUMBERGER AND THE COMPANY, INCLUDING: (a) RESTRICTIONS ON USE OF THE RECORDED-DATA; (b) DISCLAIMERS AND WAIVERS OF WARRANTIES AND REPRESENTATIONS REGARDING COMPANY'S USE AND RELIANCE UPON THE RECORDED-DATA; AND (c) CUSTOMER'S FULL AND SOLE RESPONSIBILITY FOR ANY INFERENCE DRAWN OR DECISION MADE IN CONNECTION WITH THE USE OF THIS RECORDED-DATA.

Contents

1. Header
2. Disclaimer
3. Contents
4. Run 2
 - 4.1 Software Version
 - 4.2 Pass Summary
 - 4.3 Log (Spikey Beach-1 RT Quad Combo)
 - 4.4 Parameter Listing
5. Tail

Run 2

Software Version

Acquisition System		Version	
MaxWell		1.2.8706.0	
Framework Patch		FWK-BGC-20090709-1.2.8706.1016	
Application Patch		APL-BGC-DnM-1.2.8706.1021	
Computation	Description	Version	
NEUTRON_PROC	Neutron Processing, ADN	1.2.8706.0	
ARC8GammaRayComputation	ARC8 Gamma Ray Computation Package for both Real-time and Recorded Mode	1.2.8706.1021	
ARCResistivity	ARC Resistivity Computation Package for ARC Tool Family	1.2.8706.1021	
Tool Elements	Description	Software Version	Firmware Version
ARDC	ARC 8.25 Inch Tool Drilling Collar	1.2.8706.1021	
DRILLING_SURFACE	DRILLING_SURFACE	1.2.8706.1016	
ADNP	Azimuth Neutron Detector Package	1.2.8706.0	8.3

Pass Summary

Run Name	Pass Objective	Direction	Top	Bottom	Acquisition Start Date	Acquisition Start Time
Run 2	Drilling	Down	804.72 m		11-Sep-2009	01:32:19

All depths are referenced to toolstring zero

Log

Run 2: Drilling 52639CA3-504A-487B-8B69-8A76BC19CA9E

Description: ARC Dual Frequency 3-Log Resistivity Format: Log (Spikey Beach-1 RT Quad Combo) Index Scale: 1:200 Index Unit: m Index Type: Measured
 Depth Creation Date: 12-Sep-2009 14:35:54

A40H	ARC8:ARC8:ARDC	6in - RT
ADIA	SADN8:SADN8	6in - RT
CRPM	TELE825:TELE825	6in - RT
DRHO_A	SADN8:SADN8	6in - RT
DTRA_DH	SONICVISION8:SONICVISION8	6in - RT
GR	ARC8:ARC8:ARDC	6in - RT
P16H	ARC8:ARC8:ARDC	6in - RT
P28H	ARC8:ARC8:ARDC	6in - RT
P40H	ARC8:ARC8:ARDC	6in - RT
PEF	SADN8:SADN8	6in - RT
RHOB_A	SADN8:SADN8	6in - RT
ROP5	DRILLING_SURFACE	6in - RT
STICK	TELE825:TELE825	6in - RT
TNPH	SADN8:SADN8:ADNP	6in - RT

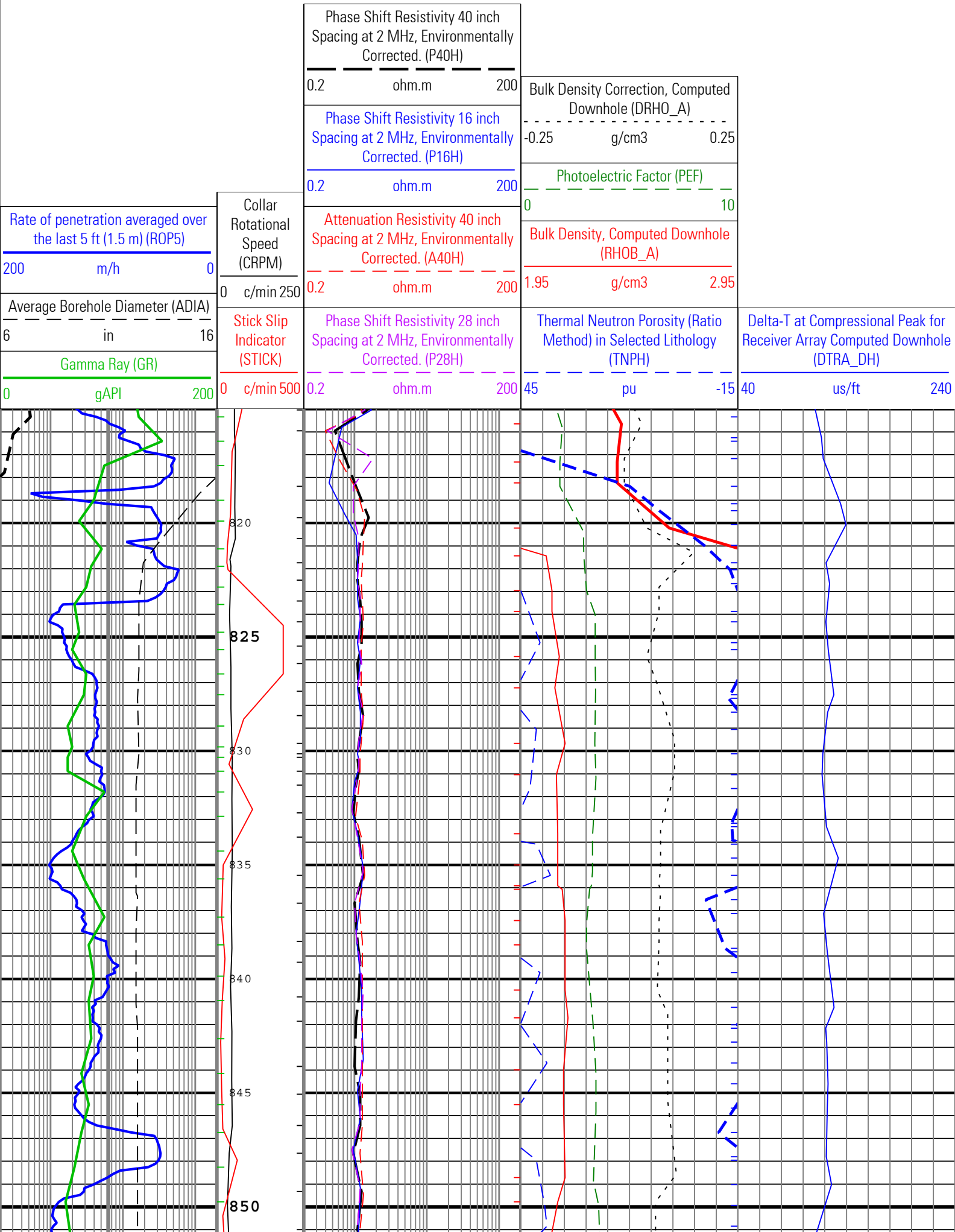
DTRA_DH - Delta-T at Compressional Peak for Receiver Array Computed Downhole

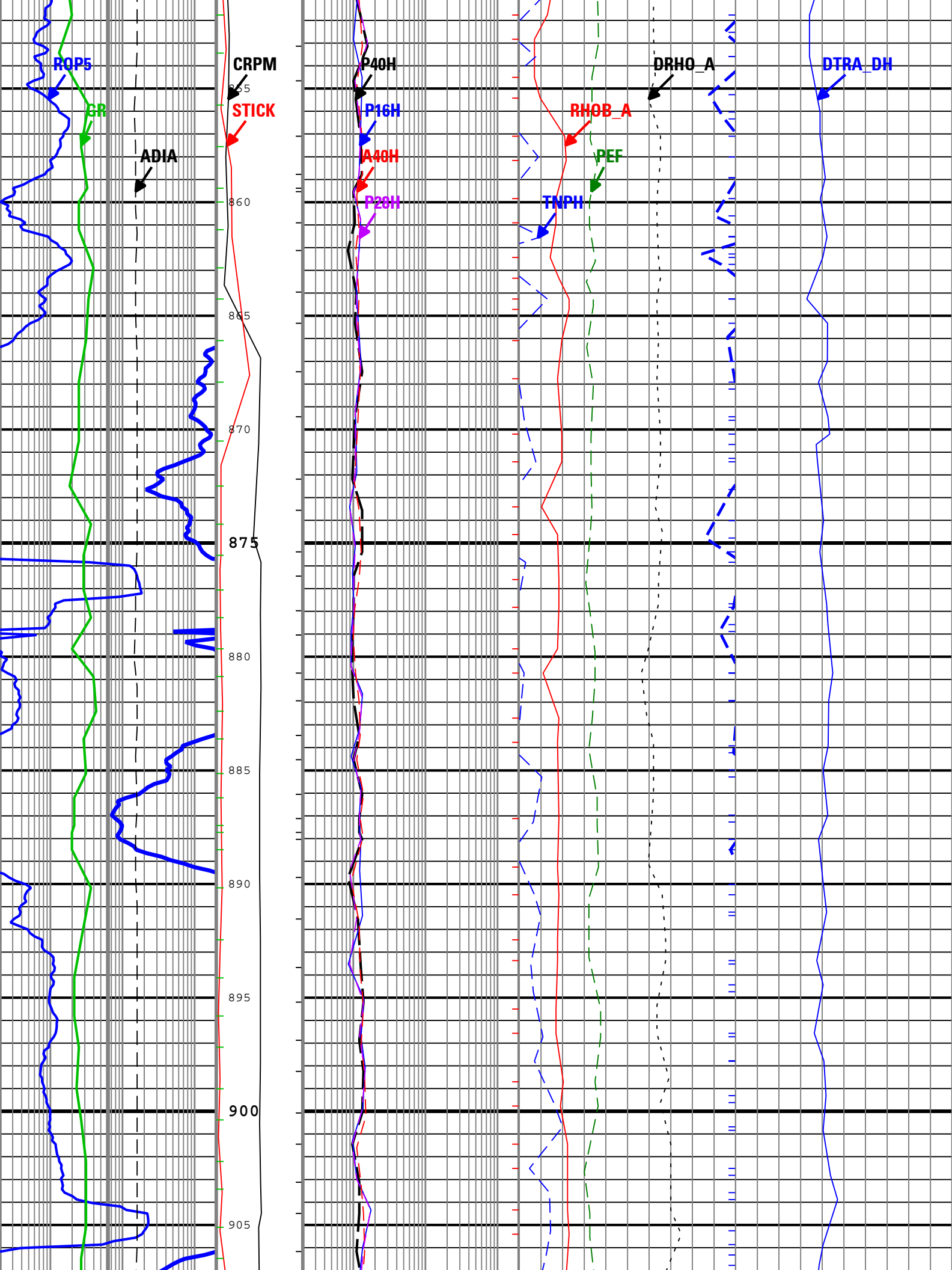
GR - Gamma Ray

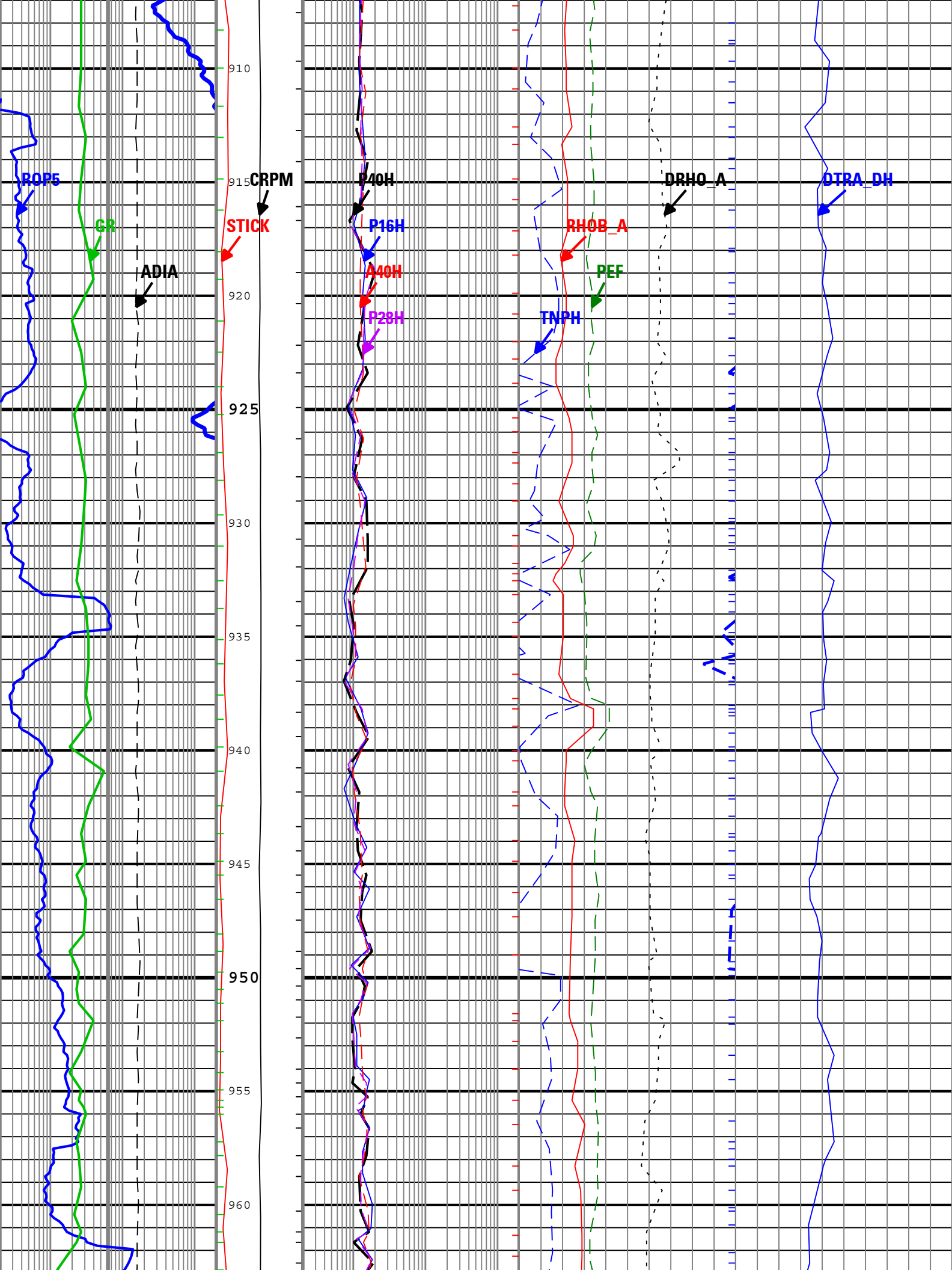
P40H - Phase Shift Resistivity 40 inch Spacing at 2 MHz, Environmentally Corrected.

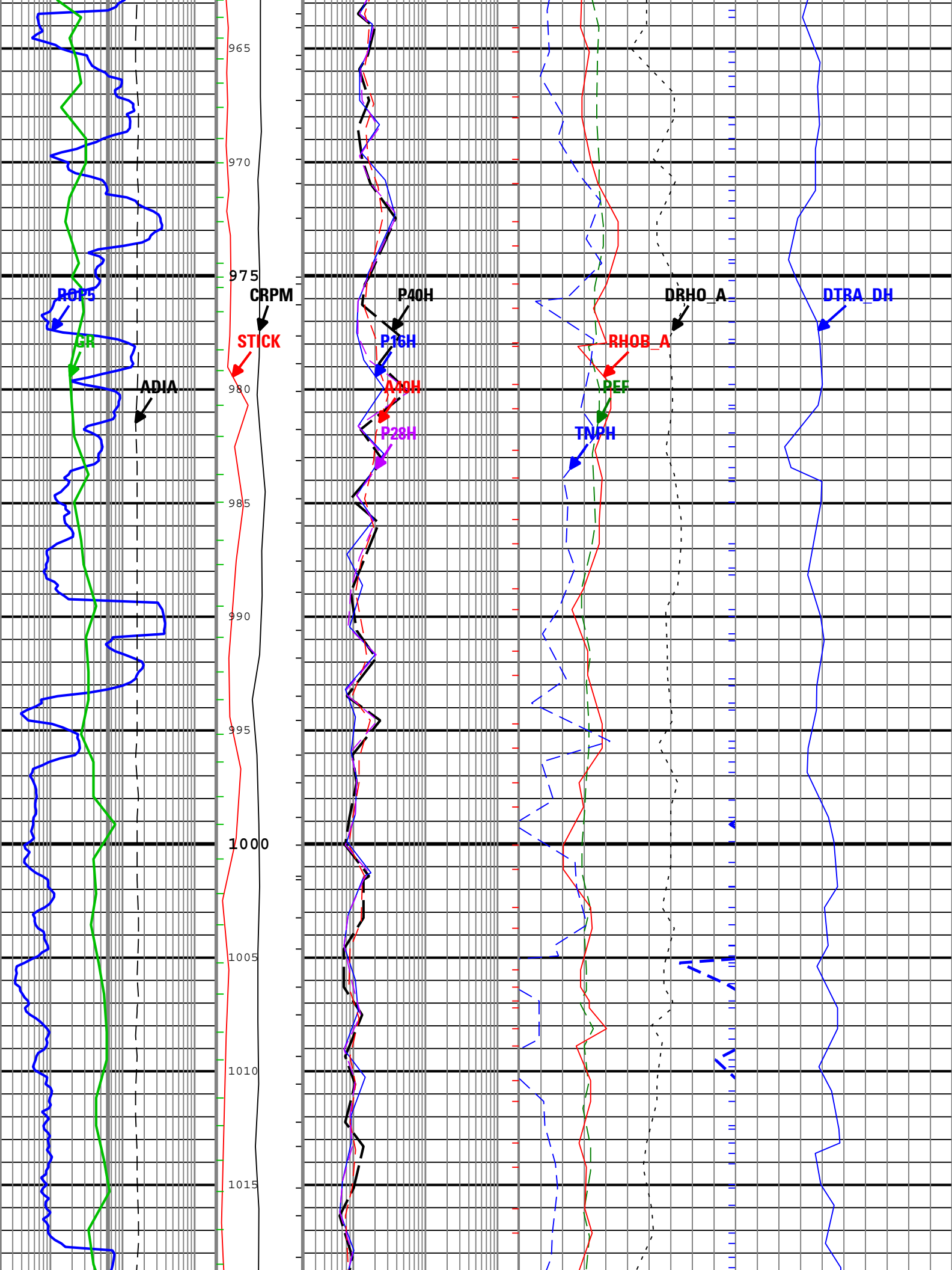
RHOB_A - Bulk Density Computed Downhole

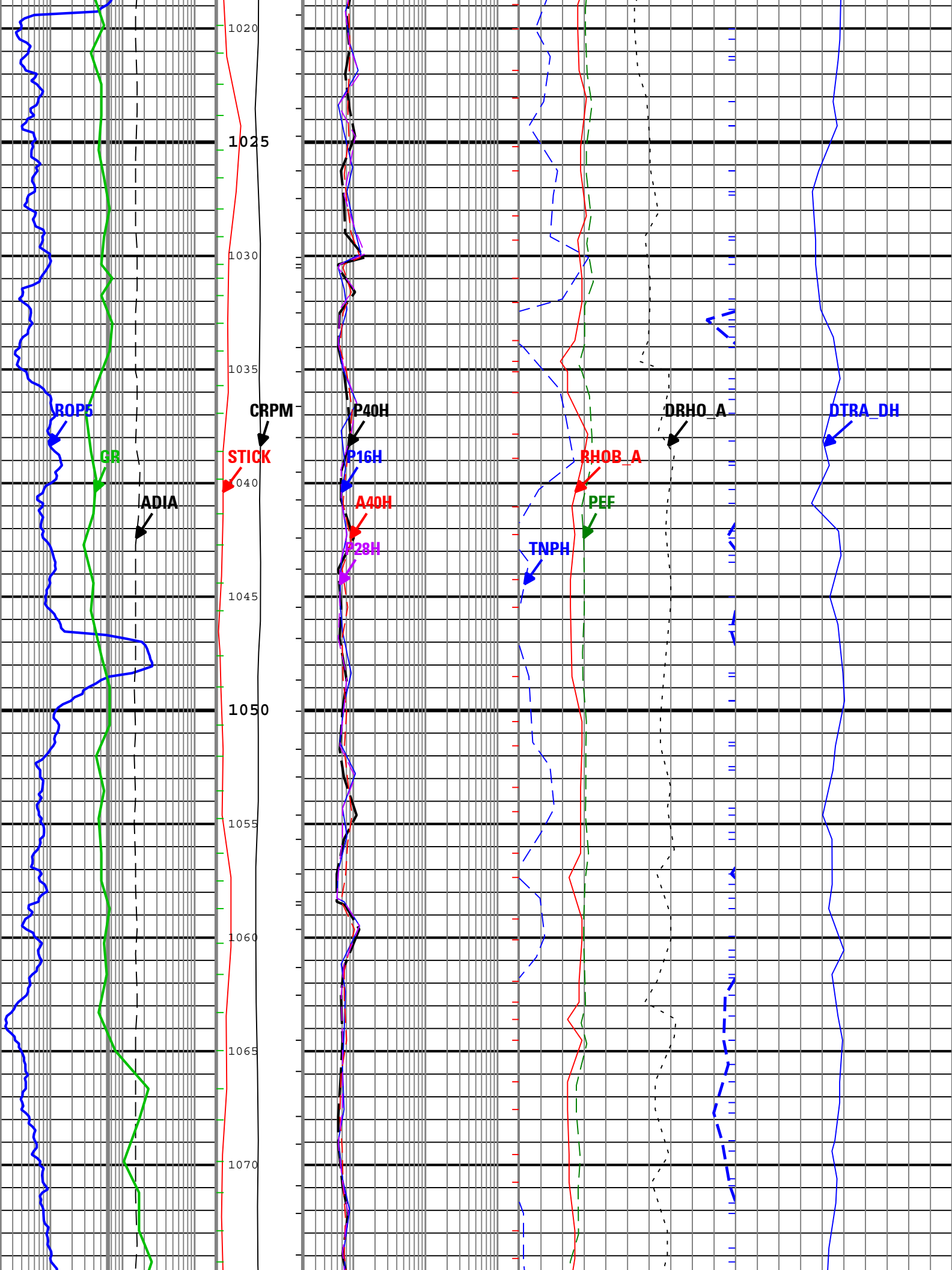
TNPH - Thermal Neutron Porosity (Ratio Method) in Selected Lithology

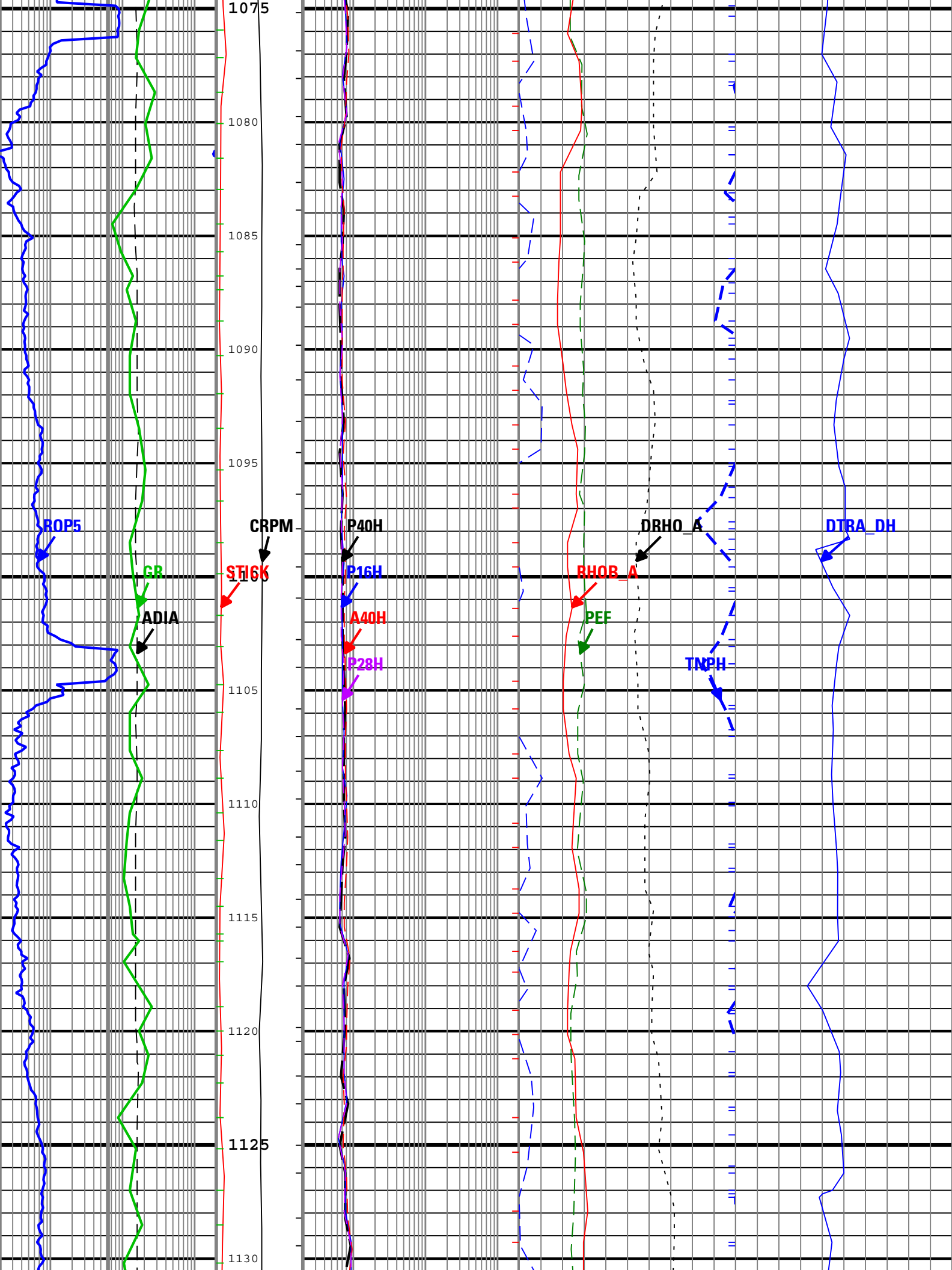


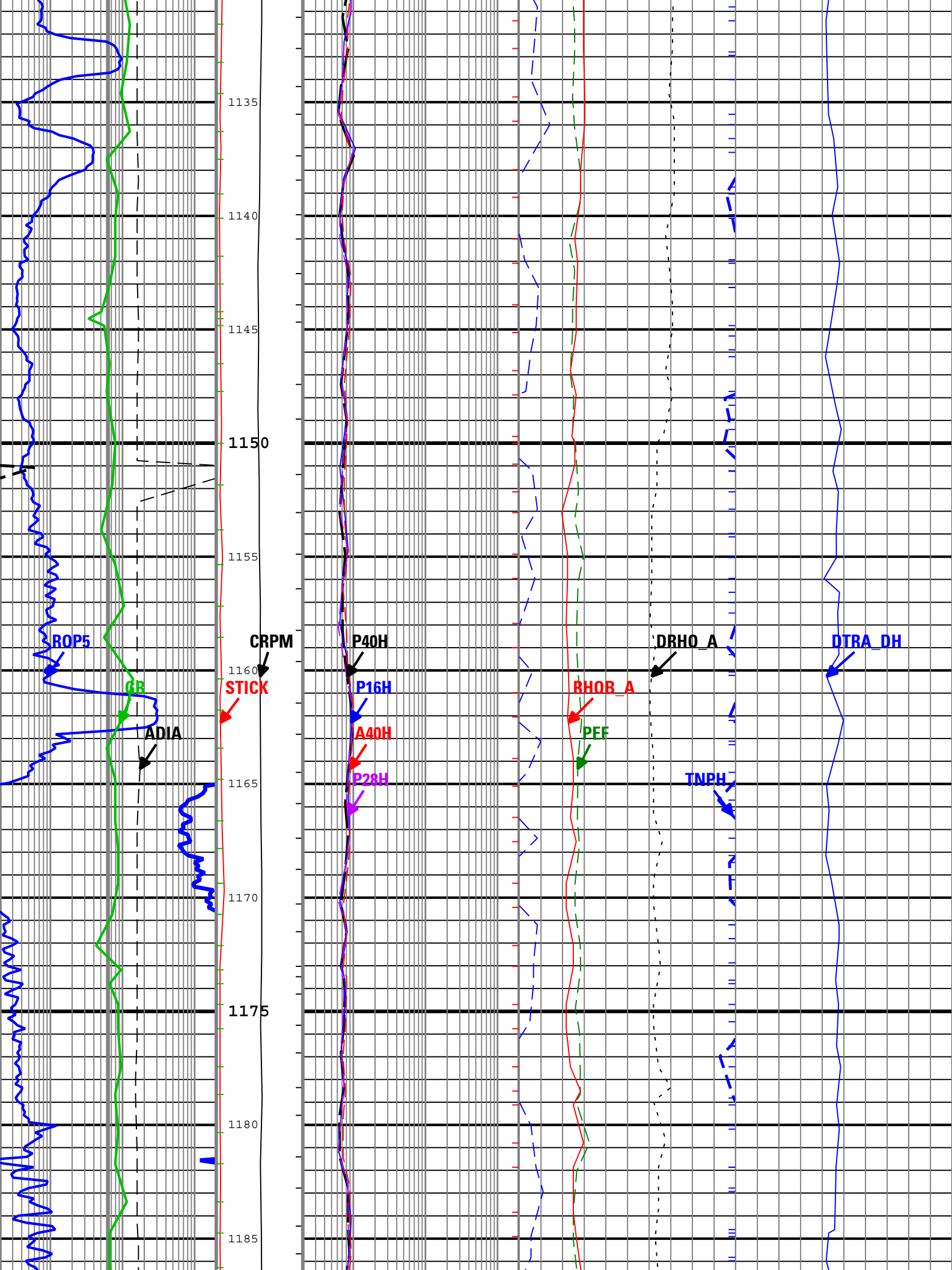


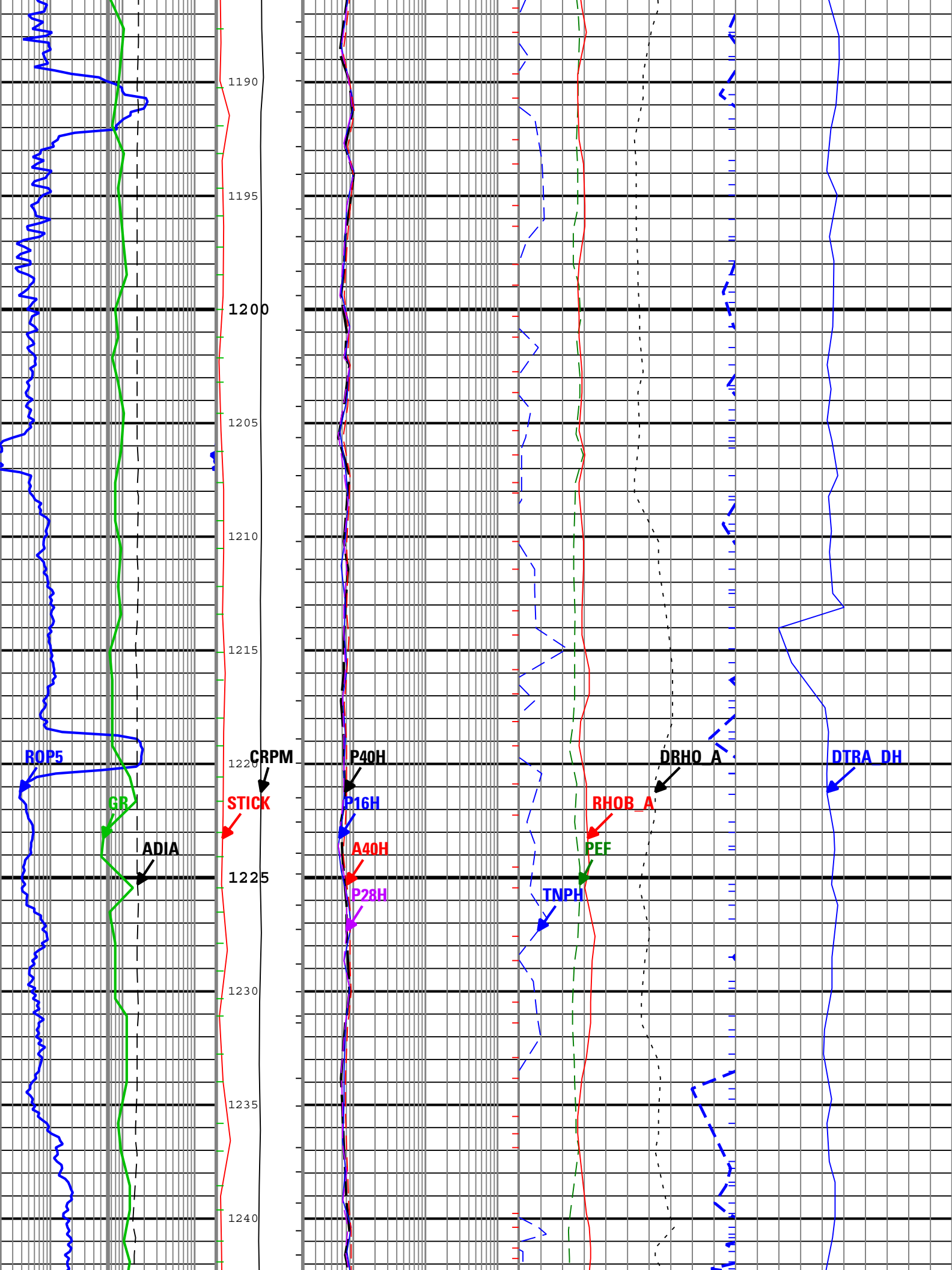


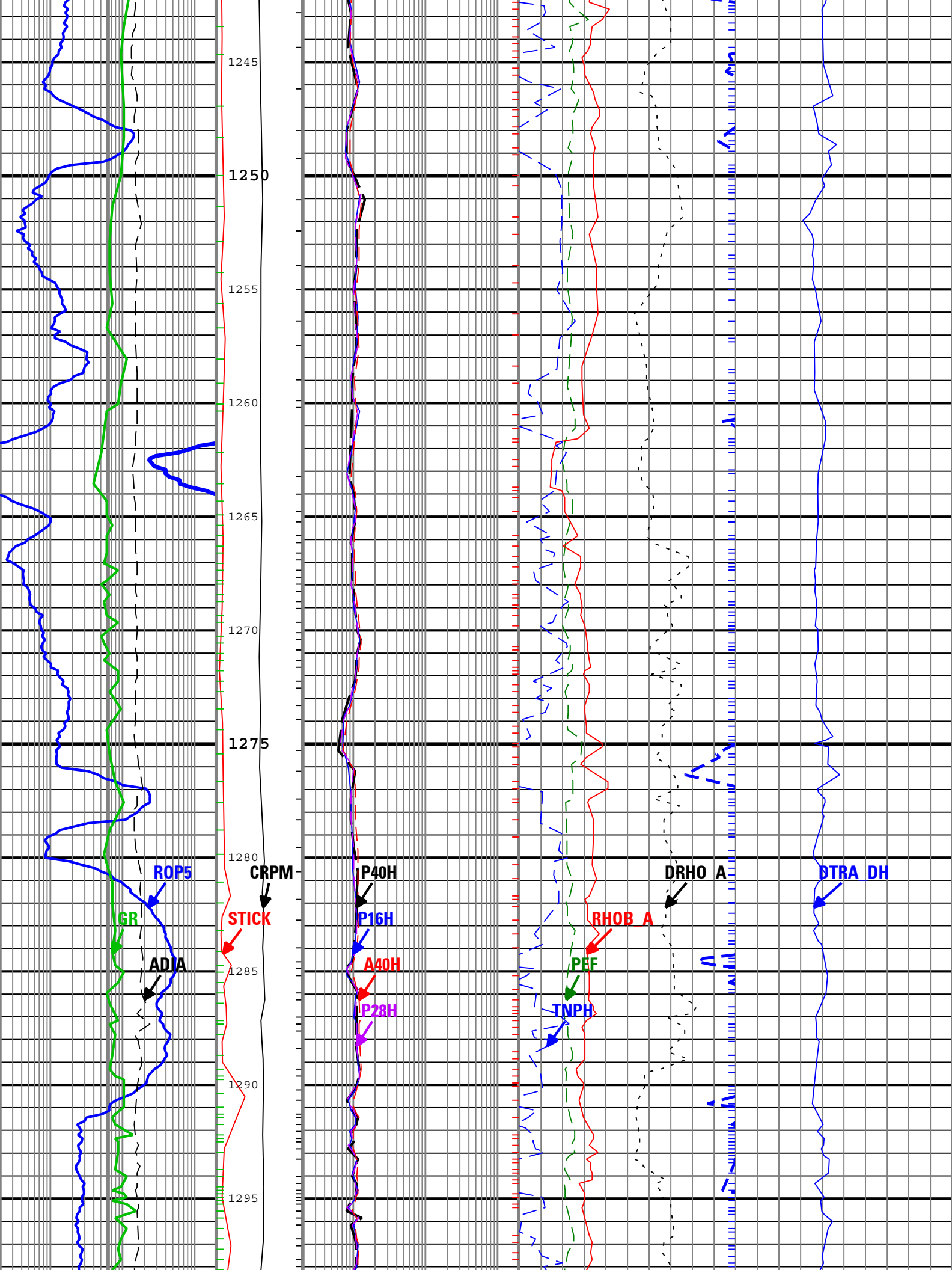


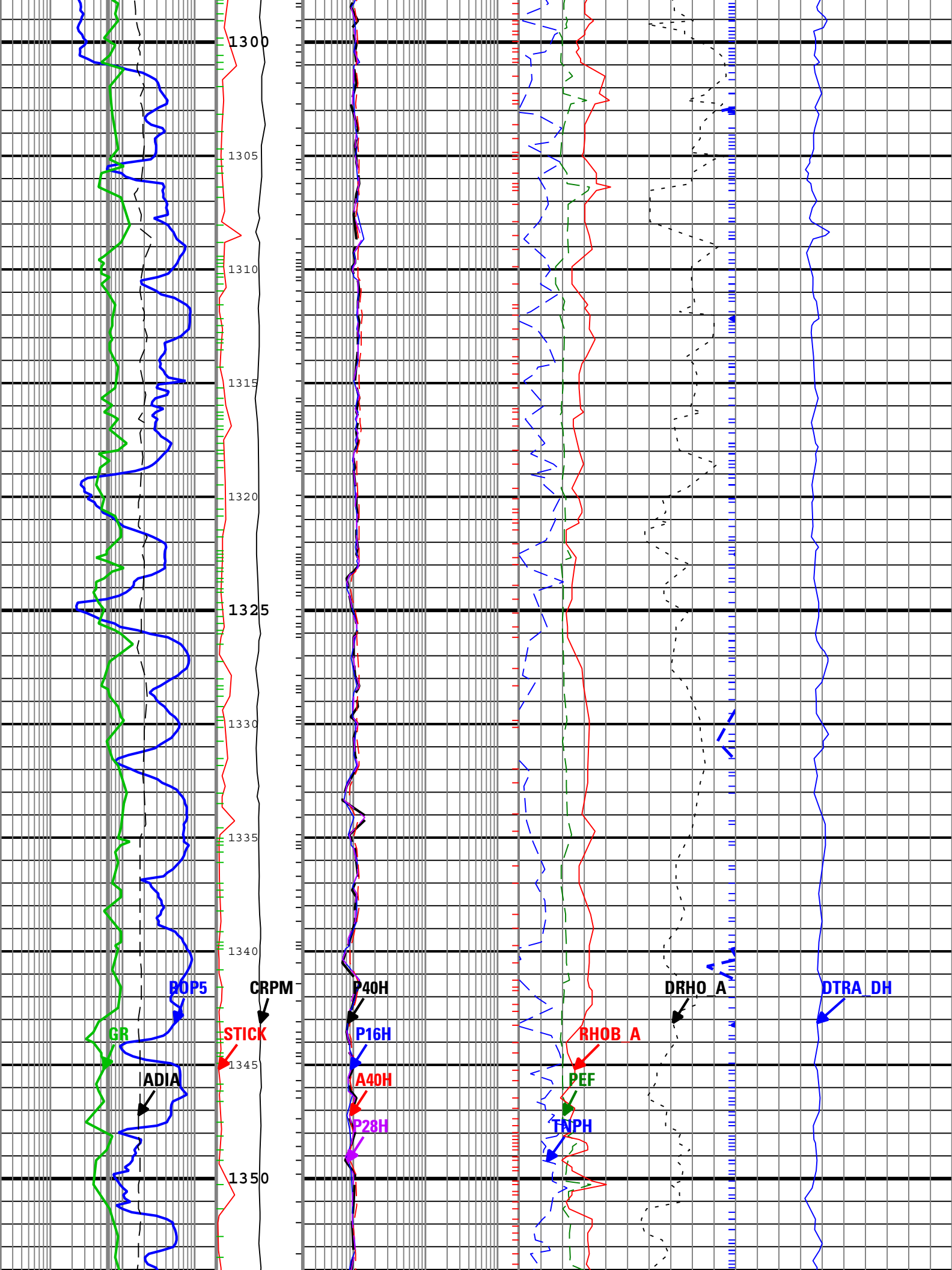


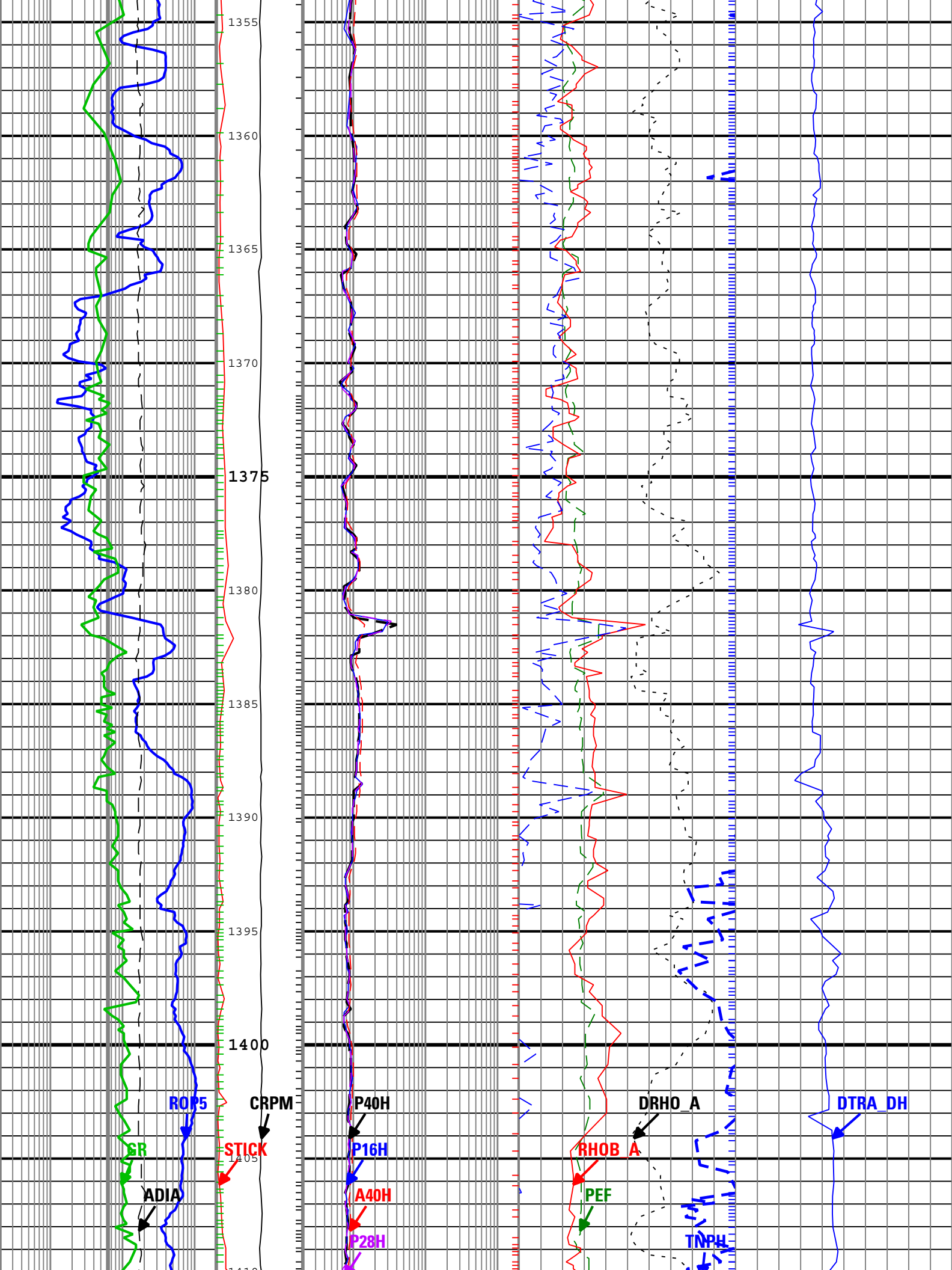


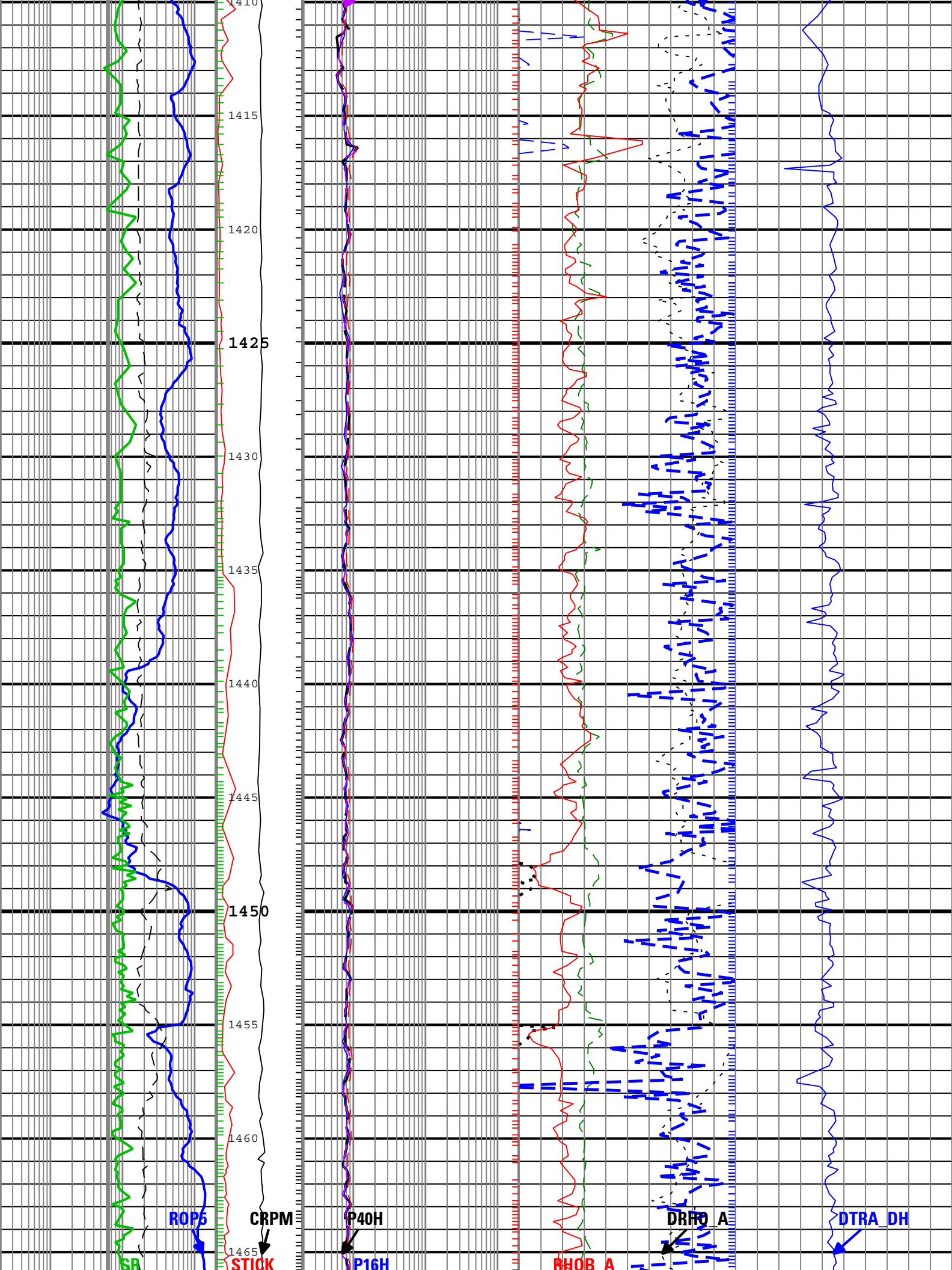


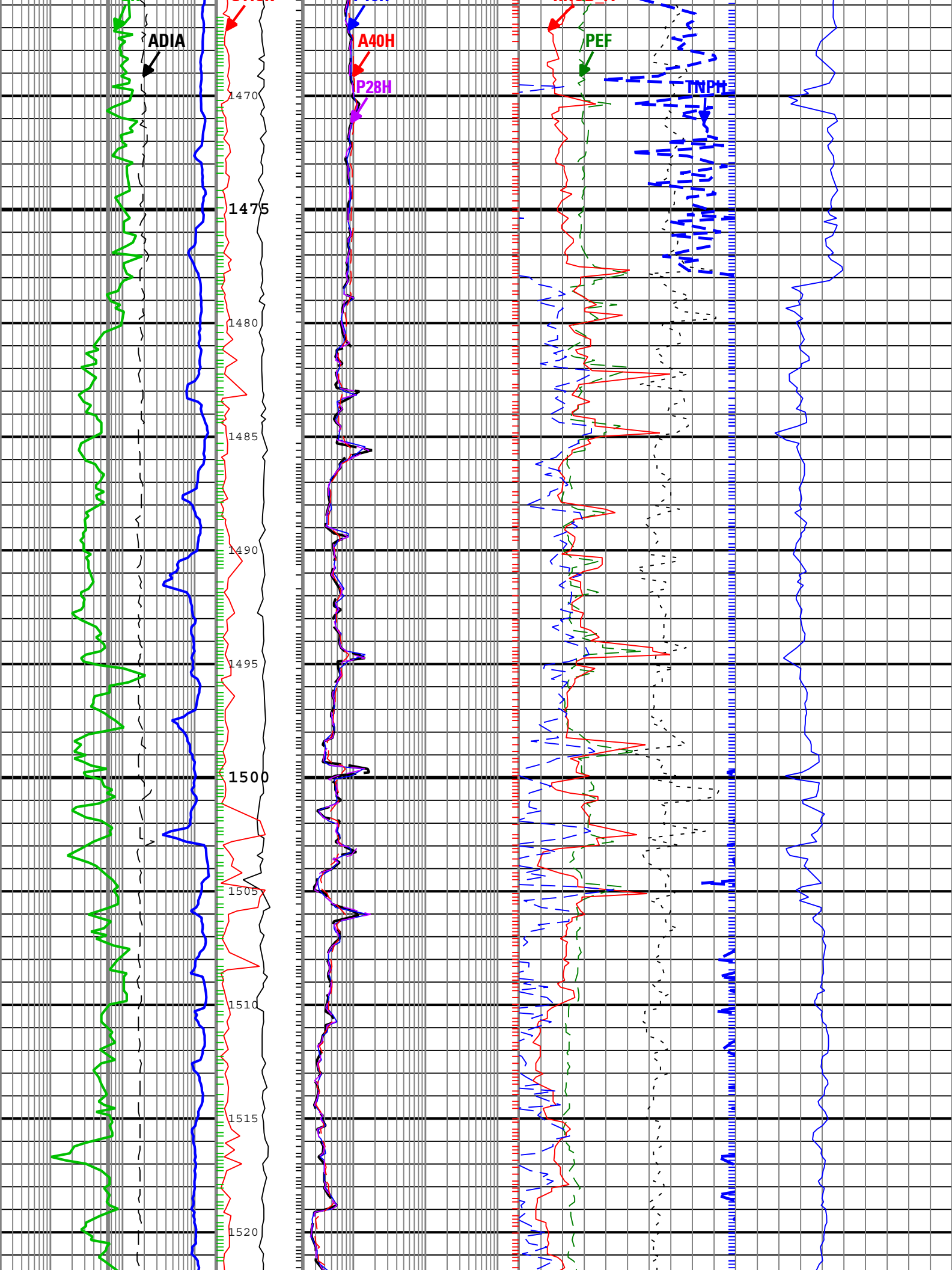


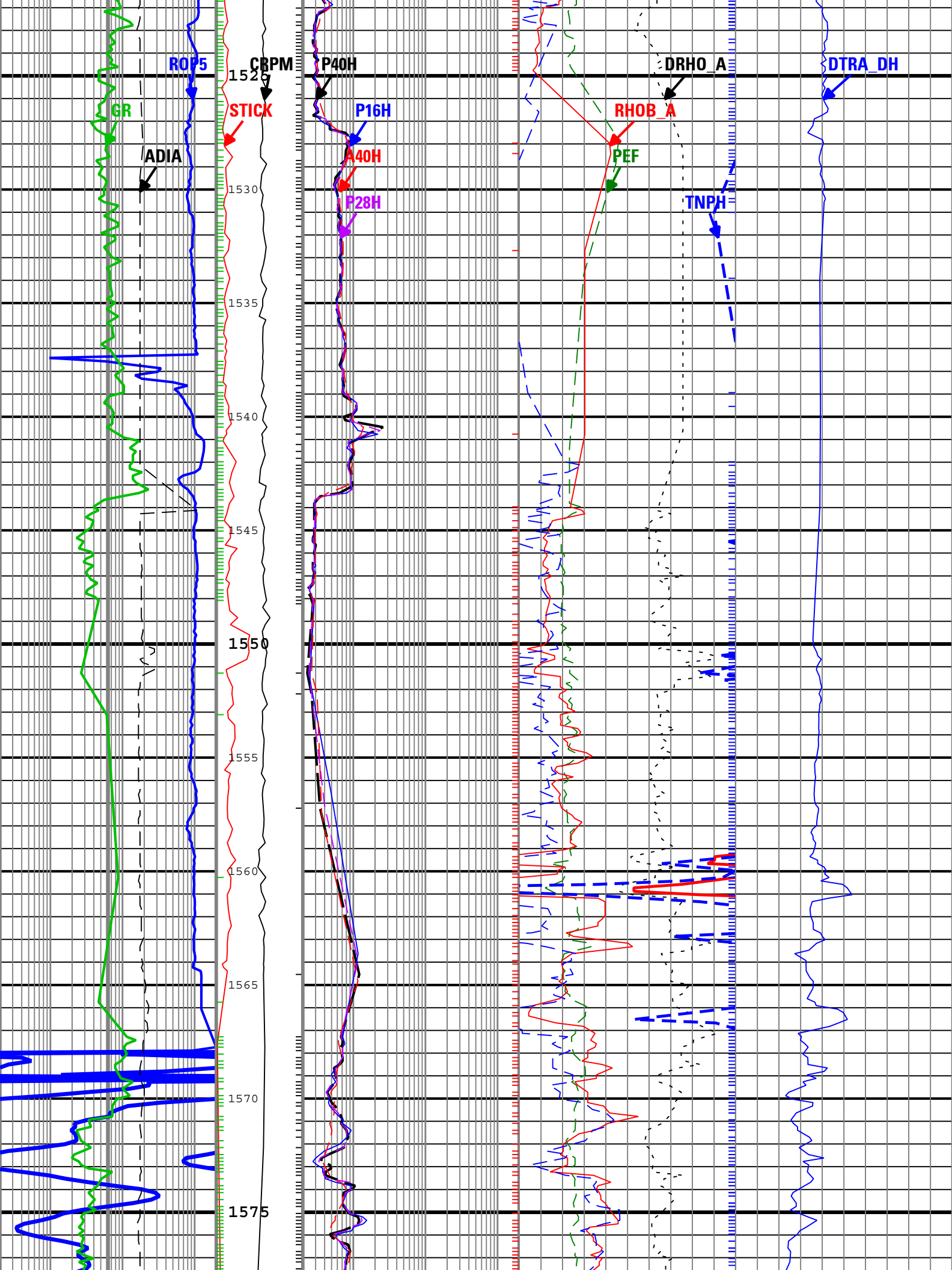


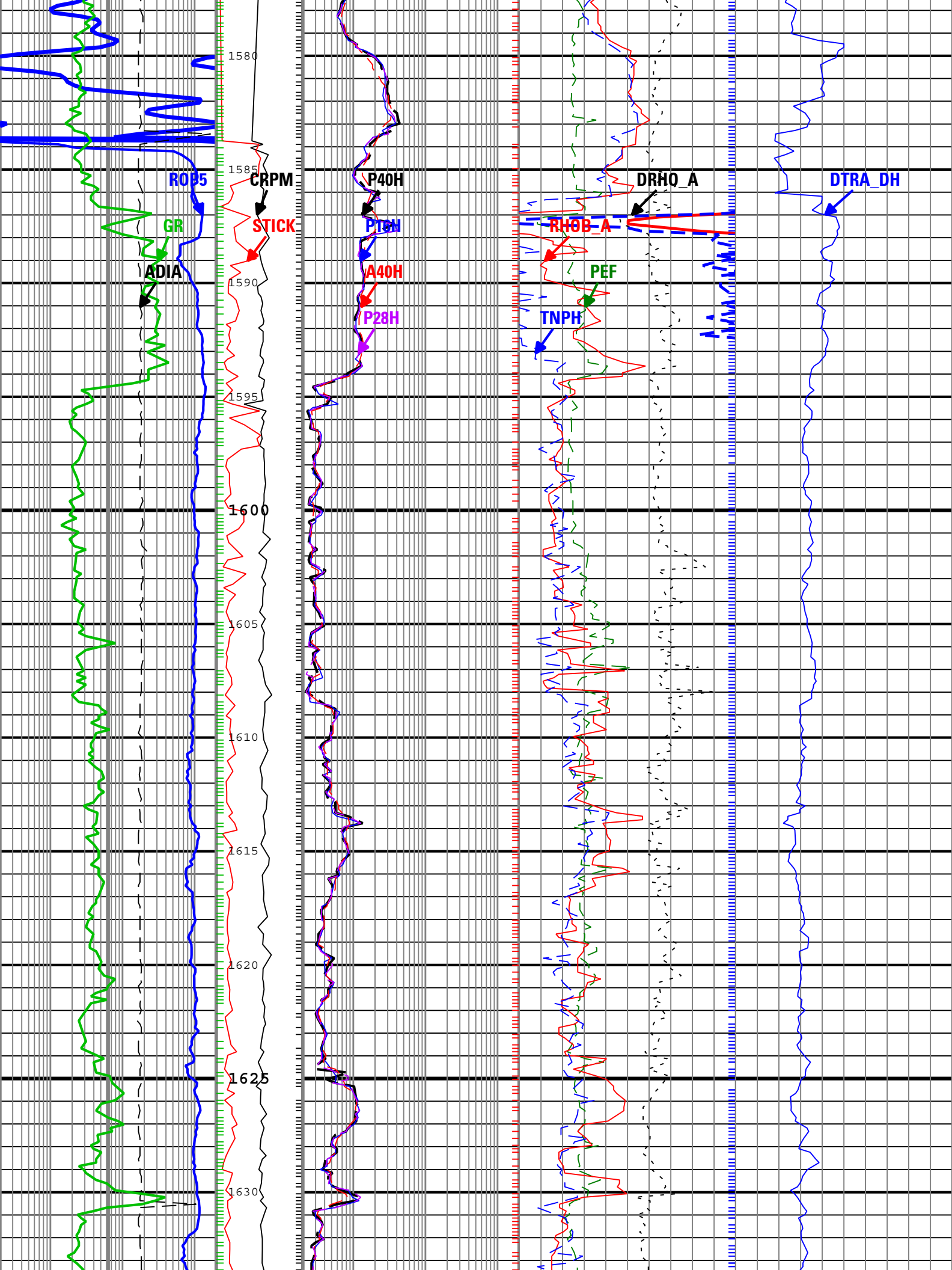


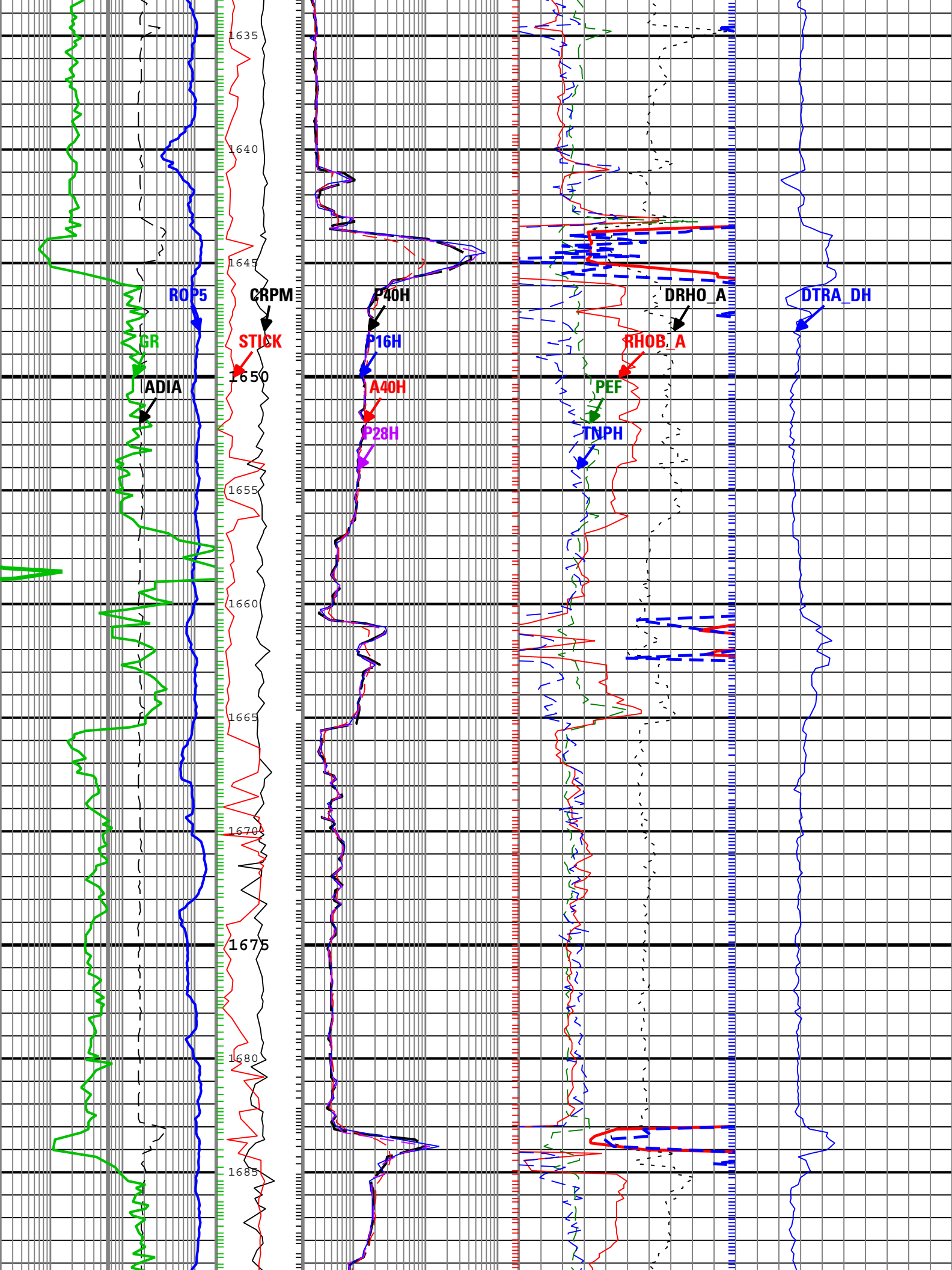


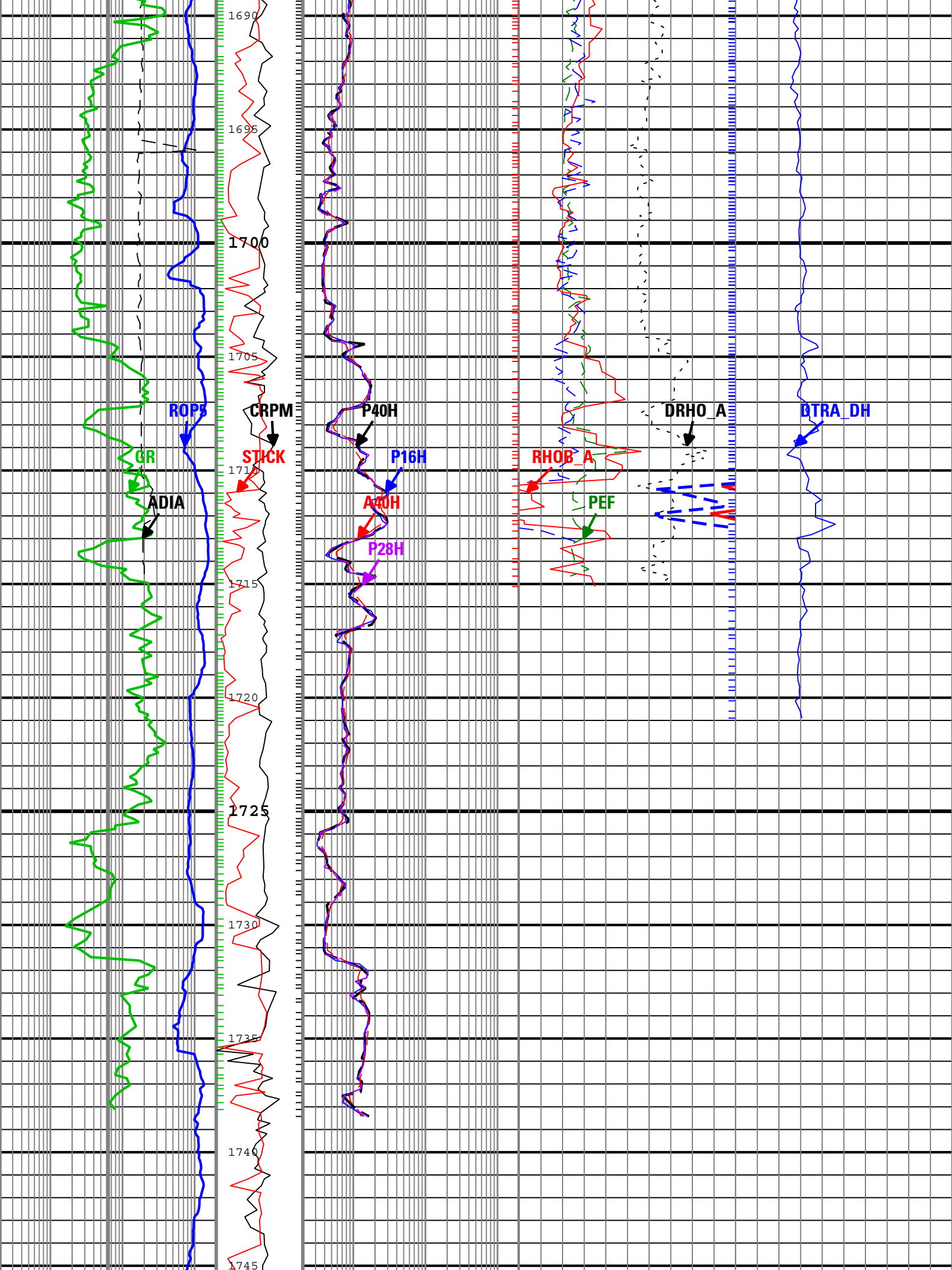


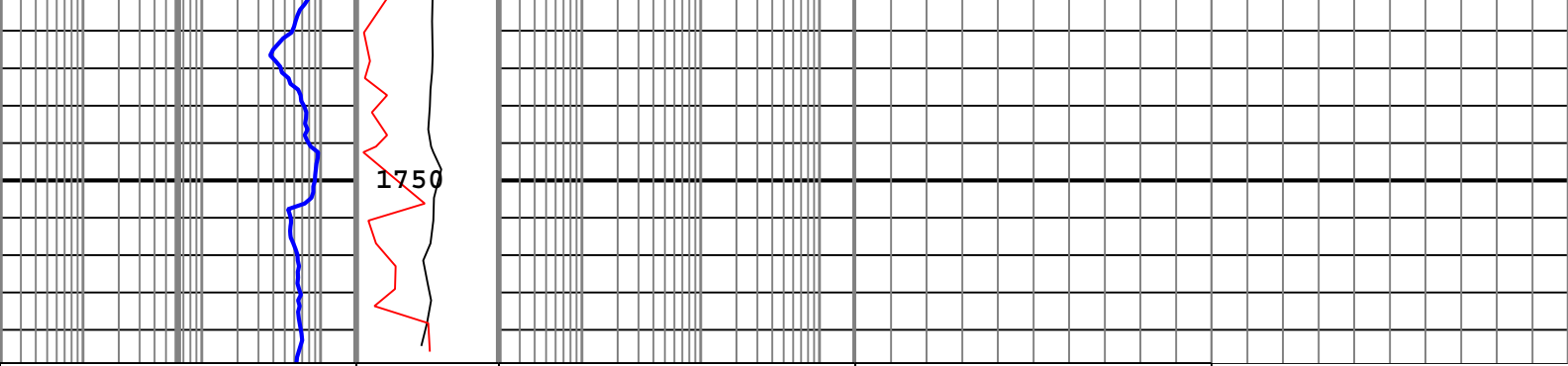












Rate of penetration averaged over the last 5 ft (1.5 m) (ROP5) 200 m/h 0	Collar Rotational Speed (CRPM) 0 c/min 250	Phase Shift Resistivity 40 inch Spacing at 2 MHz, Environmentally Corrected. (P40H) 0.2 ohm.m 200	Bulk Density Correction, Computed Downhole (DRHO_A) -0.25 g/cm3 0.25	Delta-T at Compressional Peak for Receiver Array Computed Downhole (DTRA_DH) 40 us/ft 240
Average Borehole Diameter (ADIA) 6 in 16	Stick Slip Indicator (STICK) 0 c/min 500	Phase Shift Resistivity 16 inch Spacing at 2 MHz, Environmentally Corrected. (P16H) 0.2 ohm.m 200	Photoelectric Factor (PEF) 0 10	
Gamma Ray (GR) 0 gAPI 200		Attenuation Resistivity 40 inch Spacing at 2 MHz, Environmentally Corrected. (A40H) 0.2 ohm.m 200	Bulk Density, Computed Downhole (RHOB_A) 1.95 g/cm3 2.95	
		Phase Shift Resistivity 28 inch Spacing at 2 MHz, Environmentally Corrected. (P28H) 0.2 ohm.m 200	Thermal Neutron Porosity (Ratio Method) in Selected Lithology (TNPH) 45 pu -15	

TNPH - Thermal Neutron Porosity (Ratio Method) in Selected Lithology

RHOB_A - Bulk Density, Computed Downhole

P40H - Phase Shift Resistivity 40 inch Spacing at 2 MHz, Environmentally Corrected.

GR - Gamma Ray

DTRA_DH - Delta-T at Compressional Peak for Receiver Array Computed Downhole

Description: ARC Dual Frequency 3-Log Resistivity Format: Log (Spikey Beach-1 RT Quad Combo) Index Scale: 1:200 Index Unit: m Index Type: Measured
Depth Creation Date: 12-Sep-2009 14:35:54

Channel Processing Parameters

Parameter	Description	ToolPath	Value	Unit
BHK	Drilling Fluid Potassium Concentration	Borehole	0	%
BHT	Bottom Hole Temperature	Borehole	48	degC
BS	Bit Size	COMPLETION	Depth Zoned	in
BSAL	Borehole Salinity	Borehole	Time Zoned	ppm
DFD	Drilling Fluid Density	Borehole	9	lbm/gal
DFT	Drilling Fluid Type	Borehole	Water	
GGRD	Geothermal Gradient	Borehole	18.23	degC/km
GRSE	Generalized Mud Resistivity Selection	Borehole	Computed (GEN-9)	
GTSE	Generalized Temperature Selection	Borehole	Gradient From Surface	
MATR	Rock Matrix for Neutron Porosity Corrections	Borehole	LIMESTONE	
MST	Mud Sample Temperature	Borehole	Time Zoned	degC
RMS	Resistivity of Mud Sample	Borehole	Time Zoned	ohm.m
SHT	Surface Hole Temperature	Borehole	15	degC

Depth Zone Parameters

Parameter	Value	Start (m)	Stop (m)
-----------	-------	-------------	------------

BS	17.5	815	816.61
BS	12.25	816.61	

All depth are actual.

Time Zone Parameters

Parameter	Value	Start Time	Stop Time	Start Depth (m)	Stop Depth (m)
BSAL	117818.22	11-Sep-2009 01:32:19	11-Sep-2009 19:28:28	804.72	1428.19
BSAL	102066.07	11-Sep-2009 19:28:28		1428.19	
MST	17.9	11-Sep-2009 01:32:19	11-Sep-2009 19:28:28	804.72	1428.19
MST	20.9	11-Sep-2009 19:28:28		1428.19	
RMS	0.07	11-Sep-2009 01:32:19	11-Sep-2009 19:28:28	804.72	1428.19
RMS	0.08	11-Sep-2009 19:28:28		1428.19	

All depth are at tool zero.

Tool Control Parameters

Parameter	Description	ToolPath	Value	Unit
OFFBTM_TH	Threshold for deciding whether the bit is off bottom	DnMWorkflow	0.4	m

Company: Beach Petroleum

Well: Spikey Beach-1

Field:

Rig Name: Ocean Patriot

State: VIC

Country: Australia



Schlumberger

VISION service
1:200 Measured Depth
Real Time Data